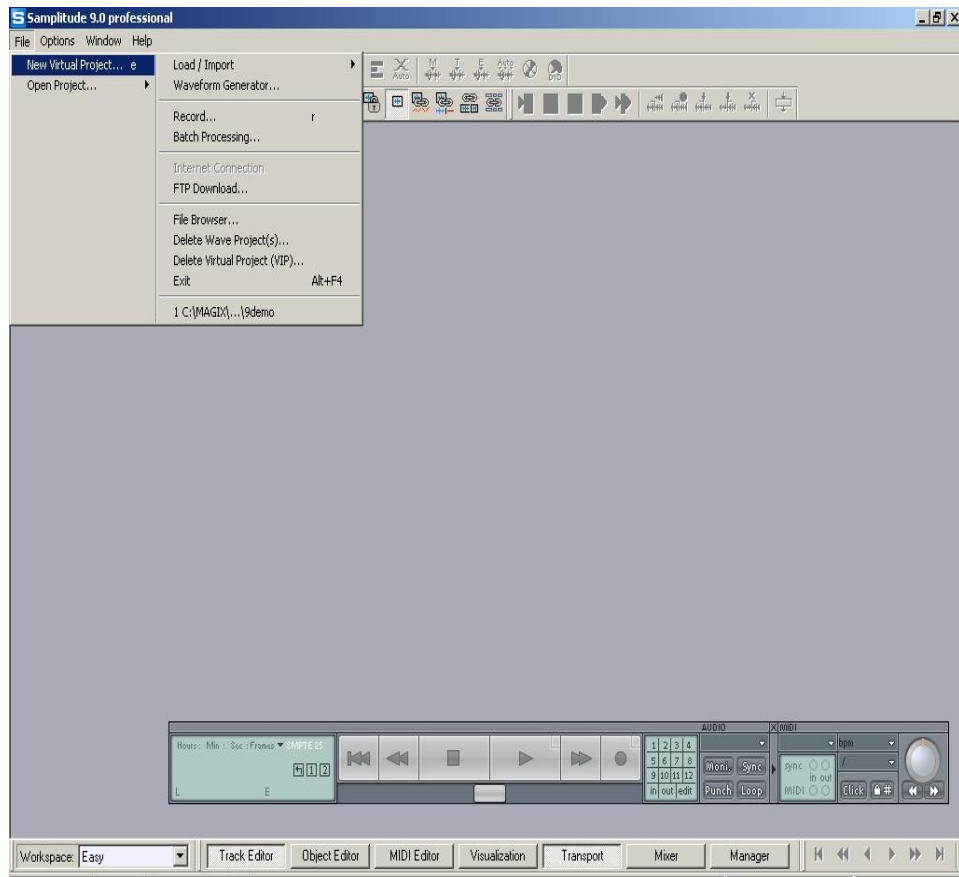
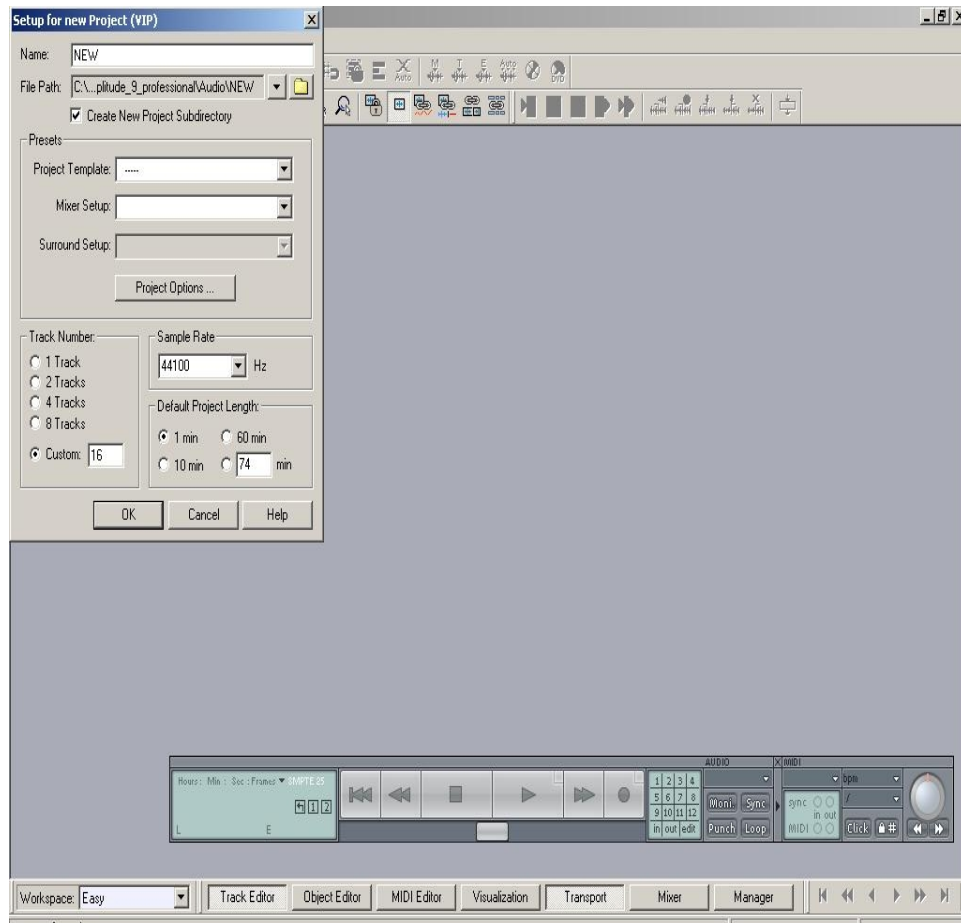


Alesis Multimix Firewire and Samplitude tutorial

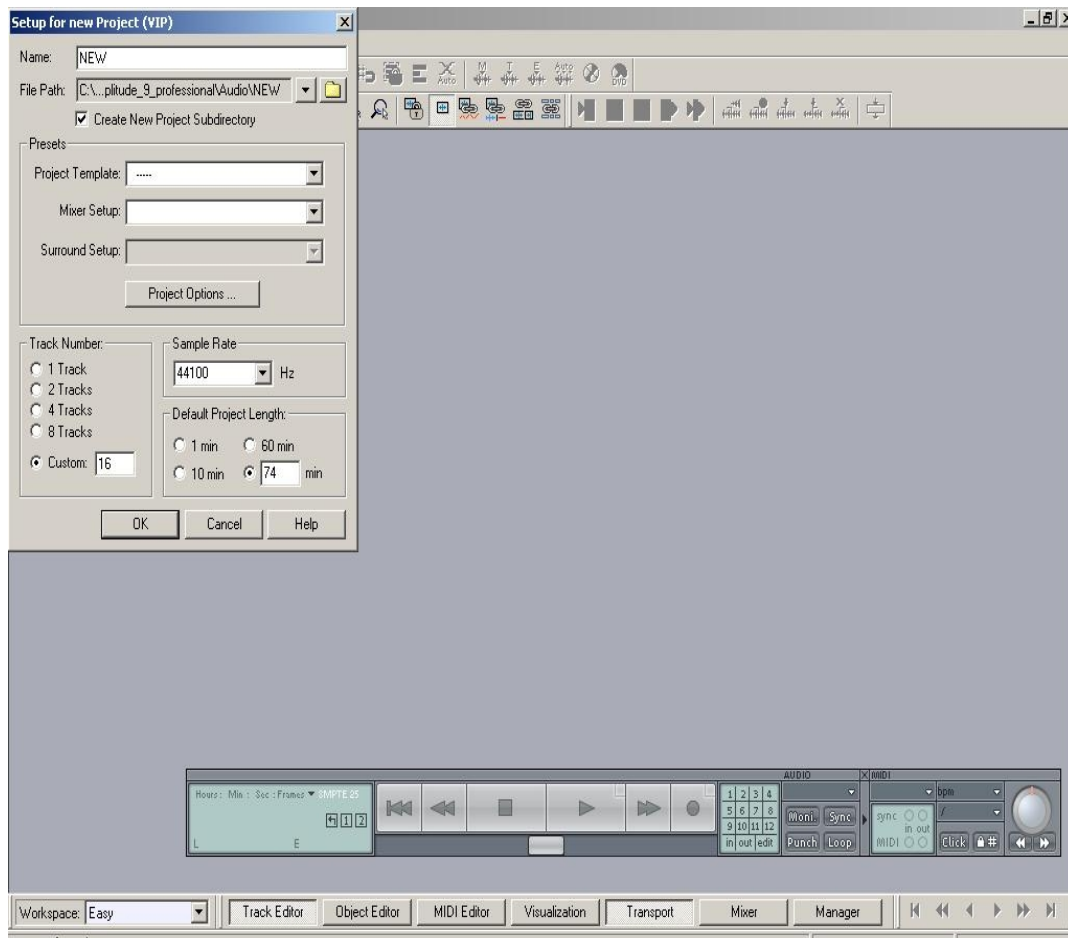
1. Go to the File menu and choose New Virtual Project.



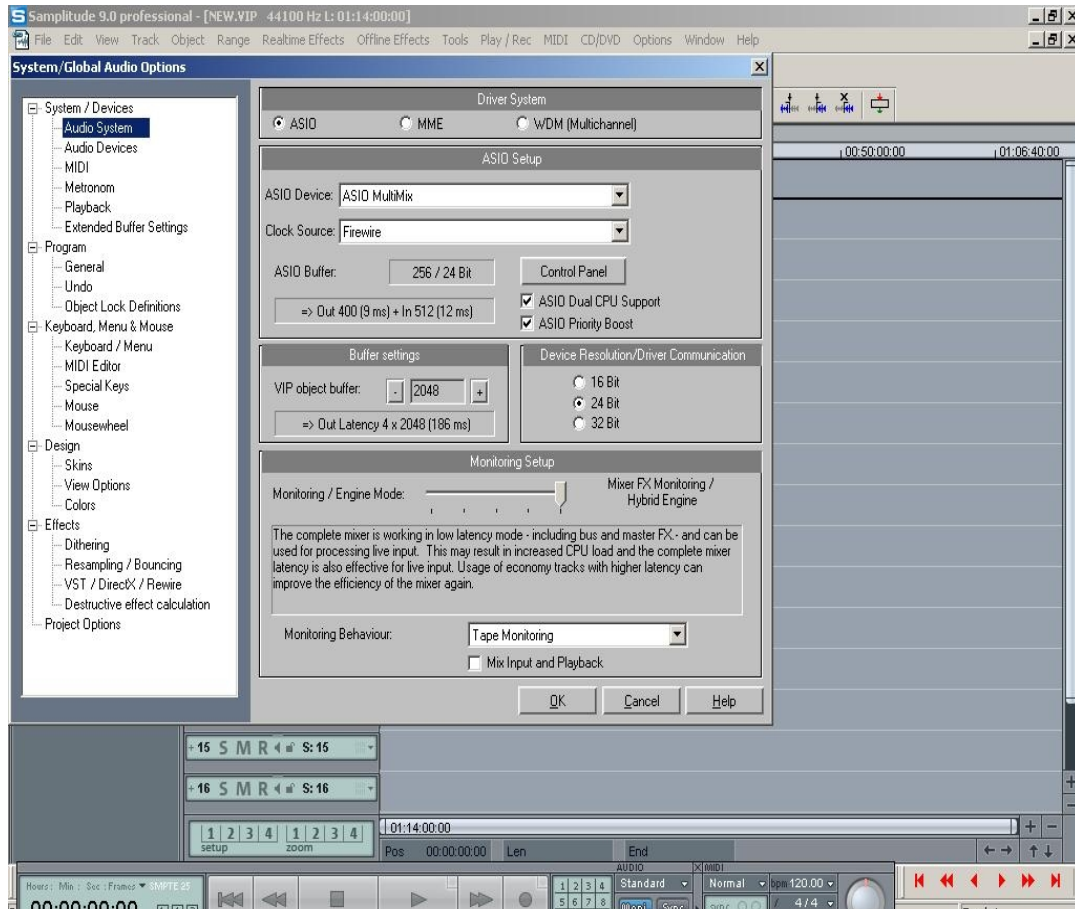
2. In the new project Setup window select Custom for the Track Number and enter 16 if you have a Multmix 16, or 12 if you have a Multmix 12, etc.



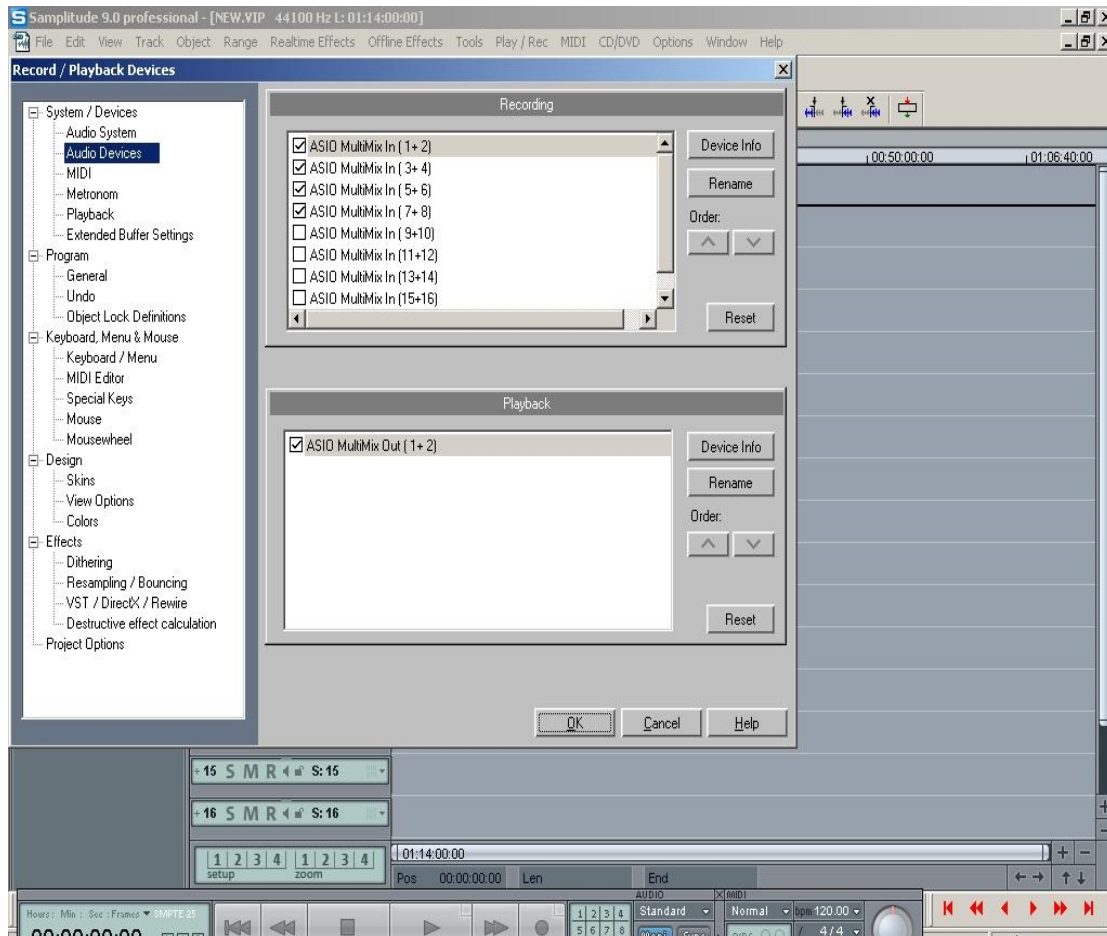
3. In the Default Project Length field, select 74 min.

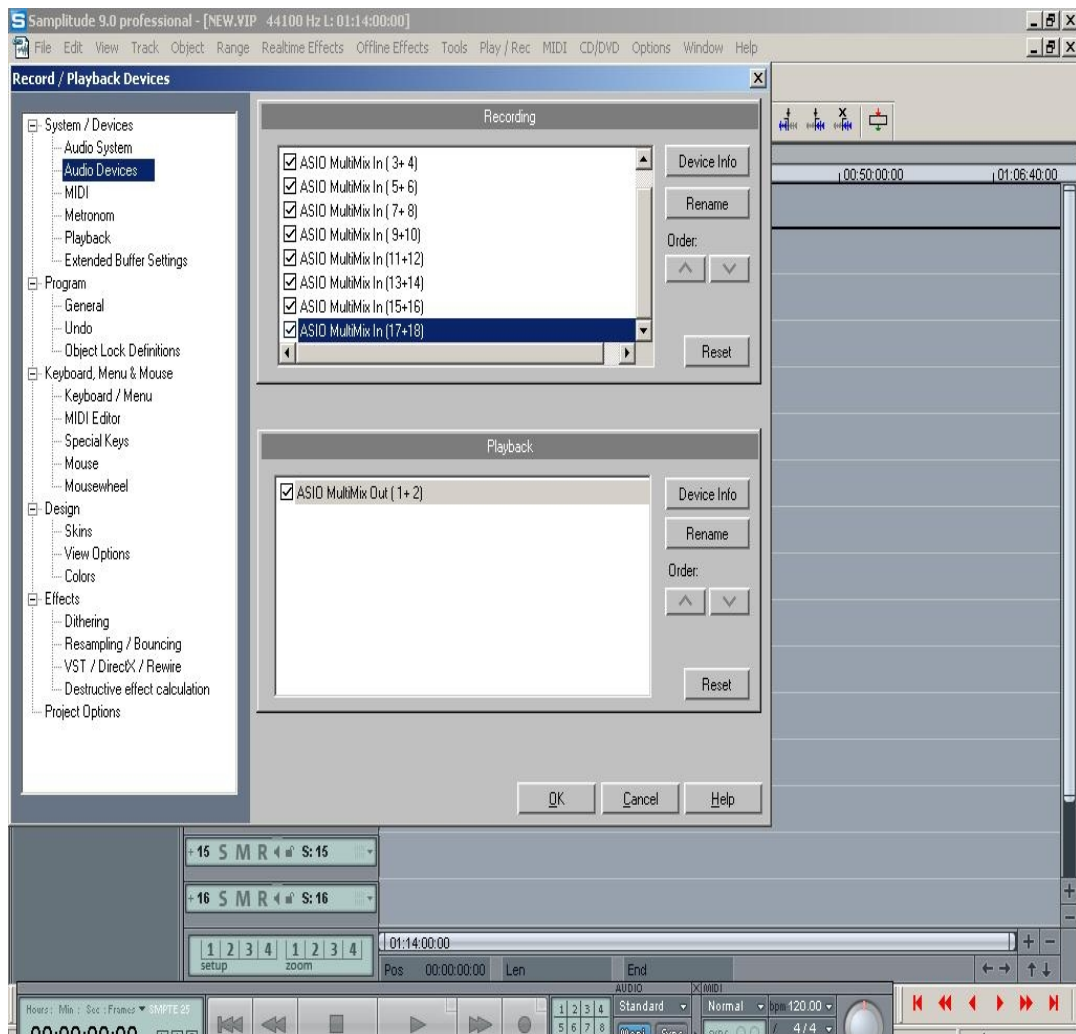


4. In the Options menu select System/Audio. Then in System/Devices, select the Audio System section. Under Driver System, select ASIO. In Asio Setup, select ASIO Multimix as the default ASIO device.

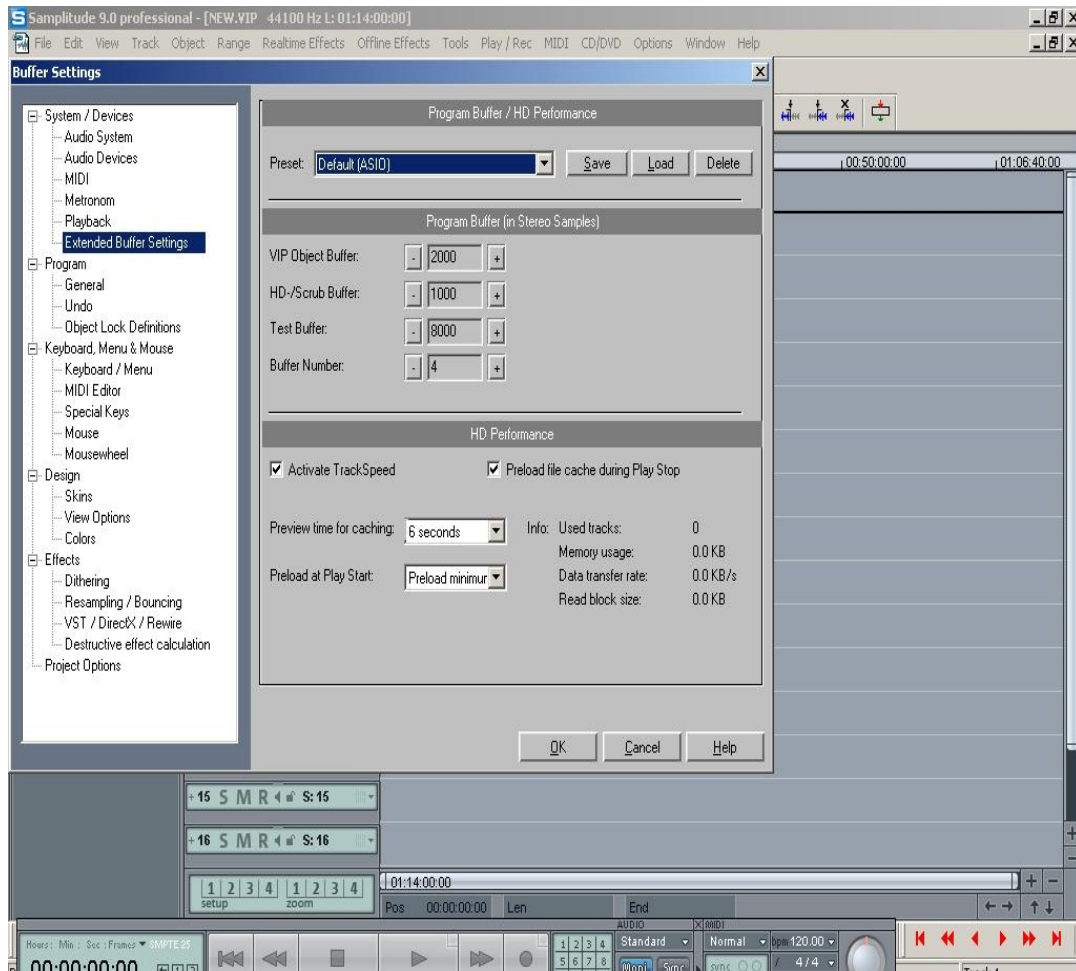


5. Then in System/Devices under Audio Devices, enable the Multimix channels. The first 4 channels are automatically activated, so the rest will also need a check mark which will allow you to record using these channels on the mixer. (see the graphic on the next page)

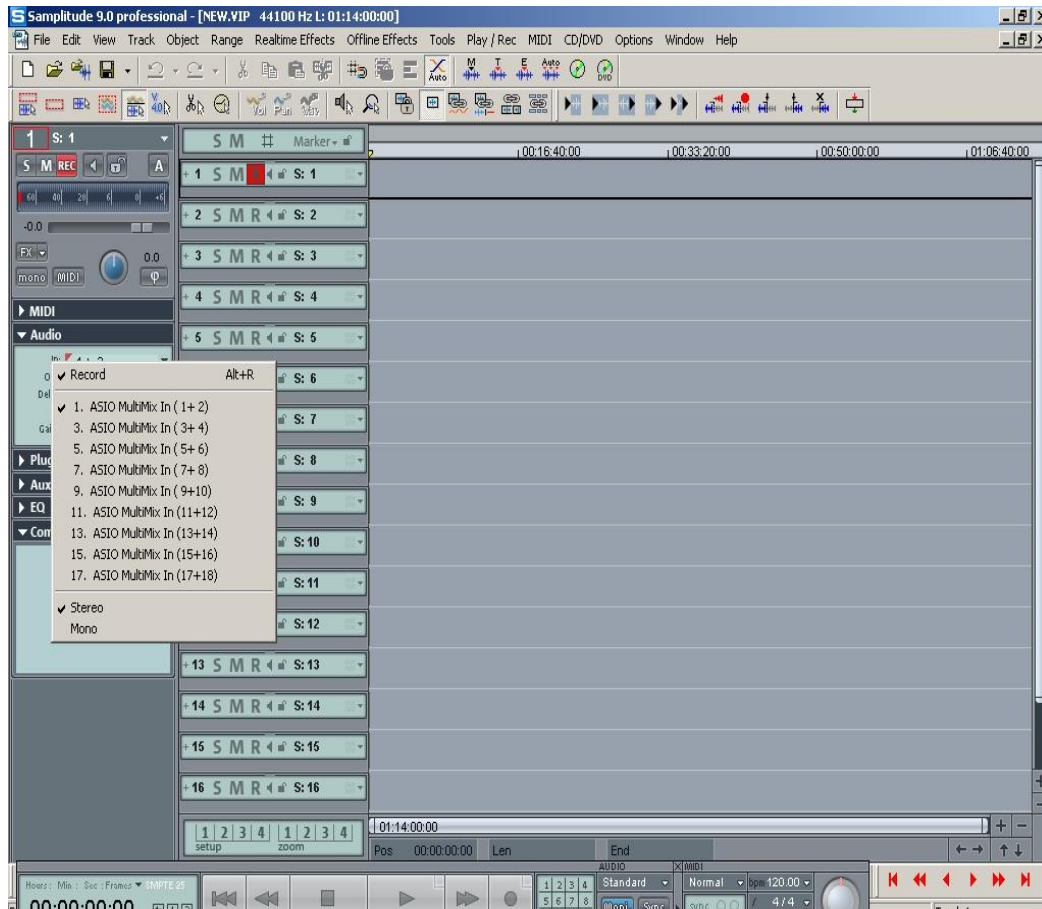




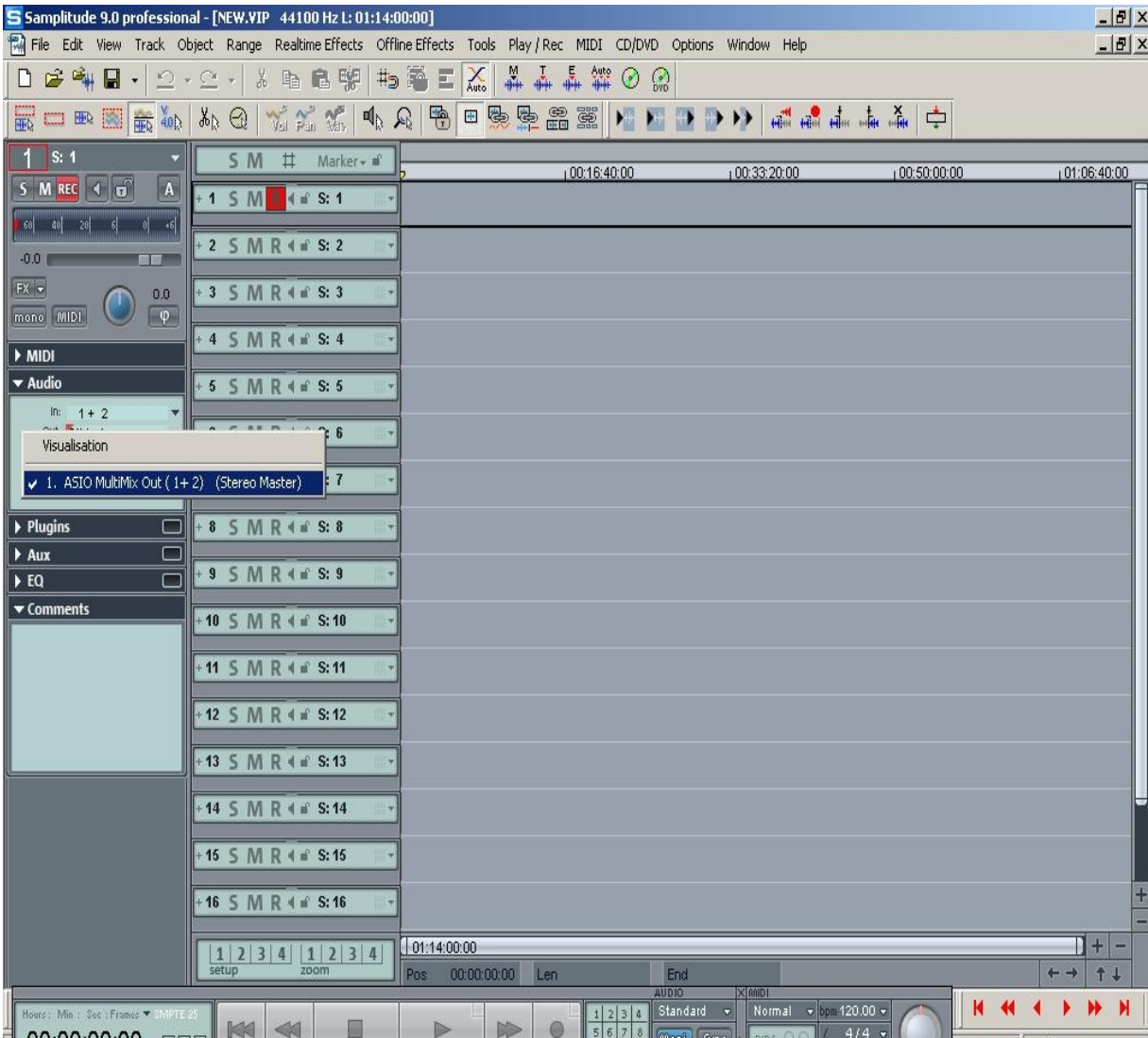
6. In the Extended Buffer Settings, select default ASIO in the Program Buffer/HD Performance.



7. On the main screen, record enable a track and select the Audio drop down to map what channel from the Multimix will be sent to this track. Right click on 'In' and select the Multimix input you would like to use.



8. Next select 'Out' and have this set to the ASIO Multimix Out (1+2) so you can monitor what you are recording and playing back through the Multimix's headphone jack, Control Room output or Main Mix outputs.



Now you are ready to start recording!