

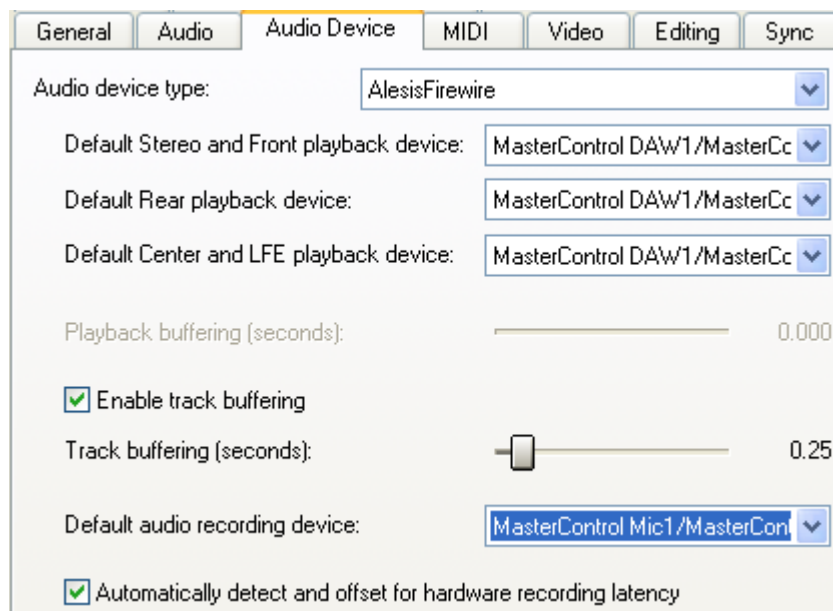
## MasterControl – Setup With Sony Acid Pro 7.0

### Contents

Audio Device Setup .....	1
Control Surface Setup .....	2

### Audio Device Setup

1. Download and install the latest MasterControl drivers from the [MasterControl page](http://www.alesis.com) at [www.alesis.com](http://www.alesis.com).
2. In Sony Acid Pro 7.0, select the **Options** menu at the top of the screen and choose Preferences.
3. In the window that opens, select the **Audio Device** tab. Configure as shown in the image below:

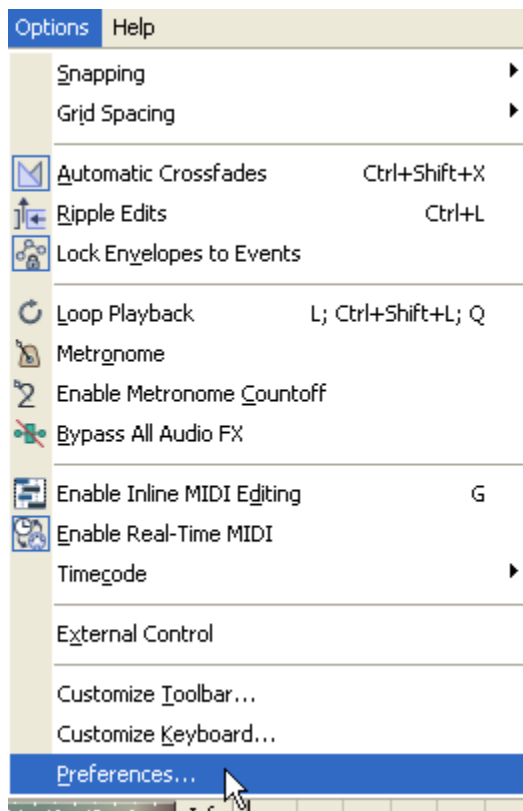


## Control Surface Setup

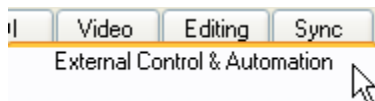
The MasterControl does not feature a dedicated Sony Acid Pro Preset. Acid Pro is compatible with the Mackie Control controller standard which the MasterControl supports. The Ableton, Cubase, and Digital Performer presets on the MasterControl are Mackie Control Presets. Using any of these will allow the MasterControl sliders and transport to operate as a control surface with any program setup to use Mackie Control.

The knobs at the top of the MasterControl, and the 1, 2, 3 selection buttons in the upper-right of the unit will generally unpredictable since the MasterControl does not feature a dedicated Sony Acid Pro Preset. However, if you use the Digital Performer preset (6), knob control bank 1 will control channel pan in the Acid Pro Mixer.

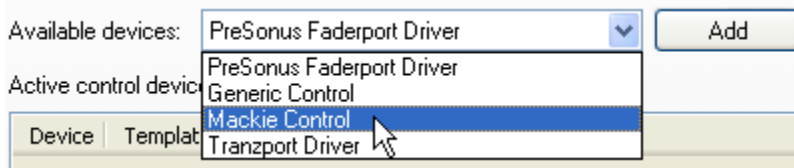
1. In Sony Acid Pro 7.0, select the **Options** menu at the top of the screen and choose Preferences.



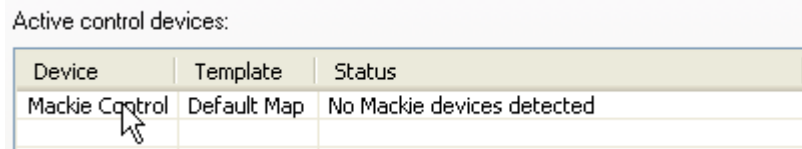
2. In the window that opens, select the **External Control & Automation** tab.



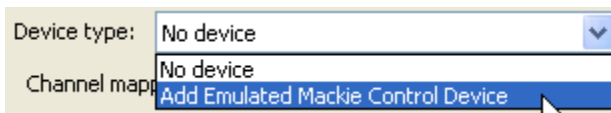
- Next to **Available Devices**, select **Mackie Control**, then click **Add**.



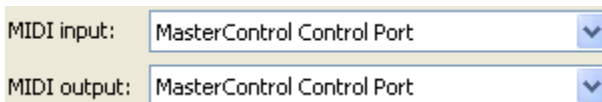
- Next, under **Active control devices** double-click **Mackie Control**.



- In the window that opens, next to **Device type**, select **Add Emulated Mackie Control Device**.



- Set both **MIDI input** and **MIDI output** to **MasterControl Control Port**.



- Then click **OK**, then **Apply**, then **OK** again to close the **Preferences** window.

- On the MasterControl hardware itself, select one of the Mackie Control Presets.

- Press **PRESET|HOME**.
- Rotate the **PUSH TO ENTER** knob and select **PRESET 6 : Digital Performer**.
- Push the **PUSH TO ENTER** knob to confirm your selection.
- Then press the knob bank 1 button in the upper-left of the MasterControl. The knobs will control channel pan in Acid Pro's Mixer.

- In Sony Acid Pro 7.0, to activate External Control, select the **Options** menu at the top of the screen and choose **External Control**.

