

## iDOCK – Enabling or Disabling the VIDEO OUTPUT Option

On 09.07.2011, new firmware was released for the Alesis **iDOCK**. [Firmware v.1.05](#), improves MIDI performance, and allows users to switch on/off the Video output. This new firmware can be downloaded from the product's dedicated support page [here](#). The updating of the firmware and the Video Mode is done through the **Alesis iDOCK Firmware Updater** (screenshot below).



### About the VIDEO OUTPUT port on the iDOCK

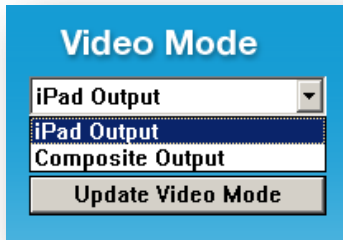
Certain (but not all) iPad apps have been designed to take advantage of the iPad iOS available video output. Apps which support this feature can output their video stream to an external monitor *instead* of to the iPad. The built-in iTunes and YouTube apps support this, so you can watch movies and videos on these apps on an external monitor or screen. A recent update to the Netflix app has brought this feature to Netflix users as well.

Note though that this feature and the app-specific support is supported on both the iPad 1 and iPad 2, and is a different technology from the newly announced [Digital AV Adapter](#) (iPad 2 only).

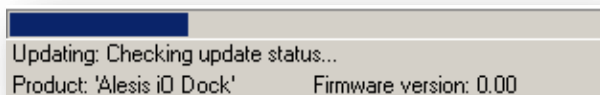
*Continue to the next page for instructions on how to change the iDOCK's Video Mode.*

## Enabling or Disabling the VIDEO OUTPUT Option

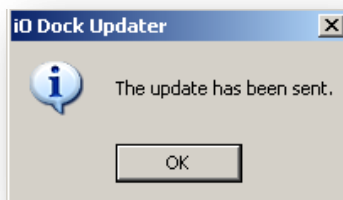
1. Connect the **iDOCK** to your computer (via USB) and to wall power (with the included power adapter).
2. Power on the **iDOCK**.
3. Open the **Alesis iDOCKUpdater** application on your computer.
4. In the dropdown menu: Choose **iPad Output** to show video on the iPad or choose **Composite Output** to show video on an external output (see below).



5. Click **Update Video Mode** to send the update to the **iDOCK**. The process should take under a minute. Do not disconnect **iDOCK** from your computer or from its power source during this process. Doing so could damage your unit. You will see the status bar on the bottom left updating (see below).



6. Once the update is complete, you will see a message that reads "The update has been sent" (see below). Click **OK**, close the **Alesis iDOCK Updater**, and disconnect the **iDOCK**. You have now successfully changed your Video Mode on the **iDOCK**.



*If you need further assistance, please contact Alesis Technical Support by phone at 401-658-5760 between 8:30PM and 6:30PM EST, Monday through Friday, or you can email the department at [support@alesis.com](mailto:support@alesis.com).*